



116A Harris Road, East Tamaki,
Auckland
Ph: 09 913 3110
sales@henrybrooks.co.nz

www.henrybrooks.co.nz

Shower Liner and Tray Install Instructions

For complete and correct installation of your new Acrylic Shower wall lining we recommend you confirm that.

Additional framework has been installed (ie, in red) to give support to the lining and wooden fixing for the shower door installation. That a wall lining (ie, Gib Aqualine) has been installed over the framework. Please note the gib board is not to be sealed or painted in any manner as this will prevent the curing of the wallboard adhesive. We recommend **Sika Showerbond or Bostic Shower Grip**.

The finished installation showing the relative position of the frame, shower tray, wall lining (Gib Aqualine) and the acrylic shower lining.



Acrylic Liner



Tiled Walls



Please Note

1. Installation of the Shower Tray and Gib-board is the same whether you are installing an acrylic Shower liner or tiled walls.
2. For the easiest install ensure the Shower Tray has been installed square and level and has been plumbed correctly according to the manufacturer's instructions.

TILED WALL LININGS

1. Waterproof Gib-board before applying tiles.
2. The tiles are then glued onto the waterproofed surface of the Gib (or Villaboard) so that they hang down in front of the tray upstand, as seen in the image above..

Please Note

On fitting the lowest row of tiles do not forget to apply silicone between the top of the Tray Upstand and Gib-board before you fit the tiles in place.

We suggest you leave a 2-3mm gap between the bottom of the tile and the tray surface and NOT silicone that joint.

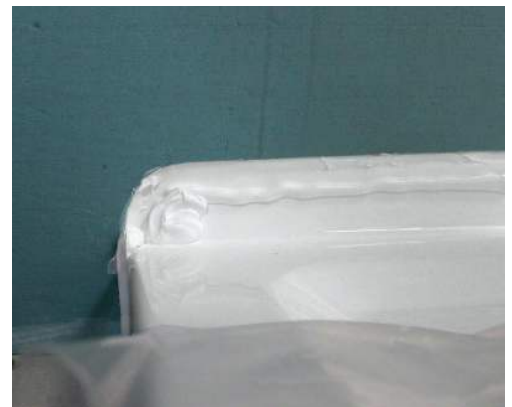
Your tiler may want to completely fill that gap, and that's up to him as they will carry the warranty.

ACRYLIC WALL LININGS

- 1) Check the wall linings for freight and handling damage and report any damage immediately to the source of supply.
- 2) Lift the lining into position to determine the location of the moulded wall caddy,(if it has one), Once established lift off and proceed to the next step.
NOTE: If the tray has not been installed level or the walls are out of plumb, you will need to scribe and cut the bottom edges of the linings so they will sit flat on the tray and hard onto both wall surfaces.
- 3) Measure, mark and measure again the location of the shower rose and mixer. Transfer these measurements carefully onto the acrylic lining, and double check your measurements before you cut the holes in the lining.

NOTE: Cutting of the acrylic should be undertaken with a hacksaw or jig saw with a minimum of 18 teeth per inch. If you have to remove a considerable length of liner, you can use a Stanley knife with a straight edge to cut/mark the liner at the correct place and bend it at the cut/mark to break the excess off at that point. Redress the cut edge with sandpaper. For drilling of holes up to 12 mm, use a standard twist drill applying average pressure. For drilling holes larger than 12 mm, use a hole saw.

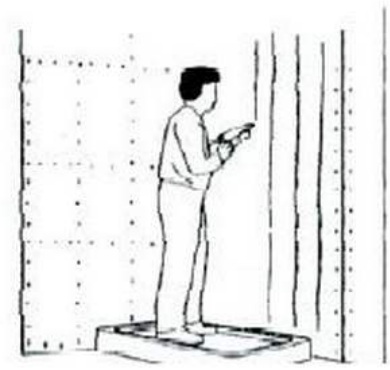
- 4) Ensure that the surfaces to be glued are free from dirt, dust and grease. Remove the clear protective covering from the shower tray upstand only, so that the silicone contacts directly with the surface of the acrylic tray and not merely onto the protective covering.
- 5) Apply a continuous bead of silicone(Approx 8mm diameter) along the entire length of the shower tray upstand. Pay particular attention to the front corners of the tray ensuring that plenty of silicone is applied over **the last 50mm as shown to the right.**



Silicone Sealant placement

- 6) Now working quickly, apply 6mm beads of Sika Showerbond adhesive or 'Bostic Shower Grip' in vertical lines approx 80mm apart onto the gib board surface.

Applying the adhesive in this manner will reduce the likelihood of any air bubbles from being trapped upon fitting the liner.
(further instructions on glue tube)



- 7) Lift the wall lining into position over the mixer and shower rose fittings and press firmly into position.
- 8) Using a large cloth or rag, rub all over the liner firmly to spread and flatten the beads of adhesive between the gib board and liner, allow 24 hours for adhesive to cure before using your shower.
- 9) Clean up any excess silicone sealant with white spirits or mineral turps.



After Liner has been fitted

NOTE; No silicone should be visible or used on the inside of the shower enclosure.

- 10) Complete the installation by fitting the mixer and shower rose.
- 11) Door and screen installation can now proceed according to the installation instructions



Henry Brooks Ltd.
116A Harris Road, East Tamaki,
Auckland
Ph: 09 913 3110
sales@henrybrooks.co.nz
www.henrybrooks.co.nz

